

Inclusive Innovation - Fireside Chat

Dr Siobhán Jordan

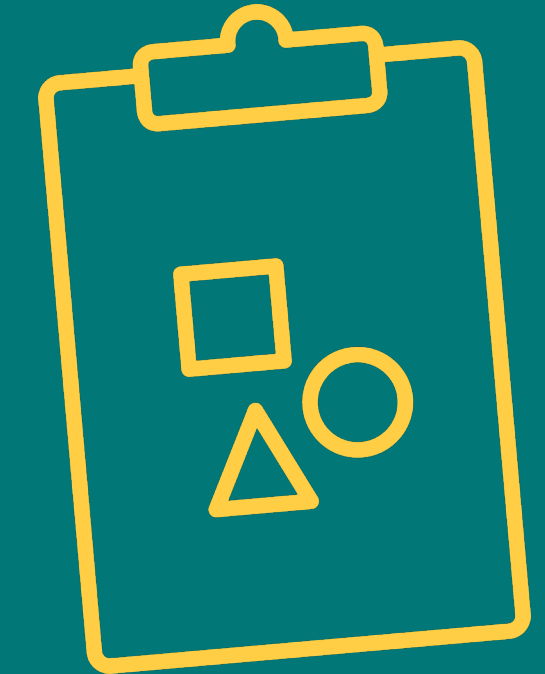
Founder & Director, Interface

Lucy Richards

Founder & Chair StudioLR & Founder of Better Company

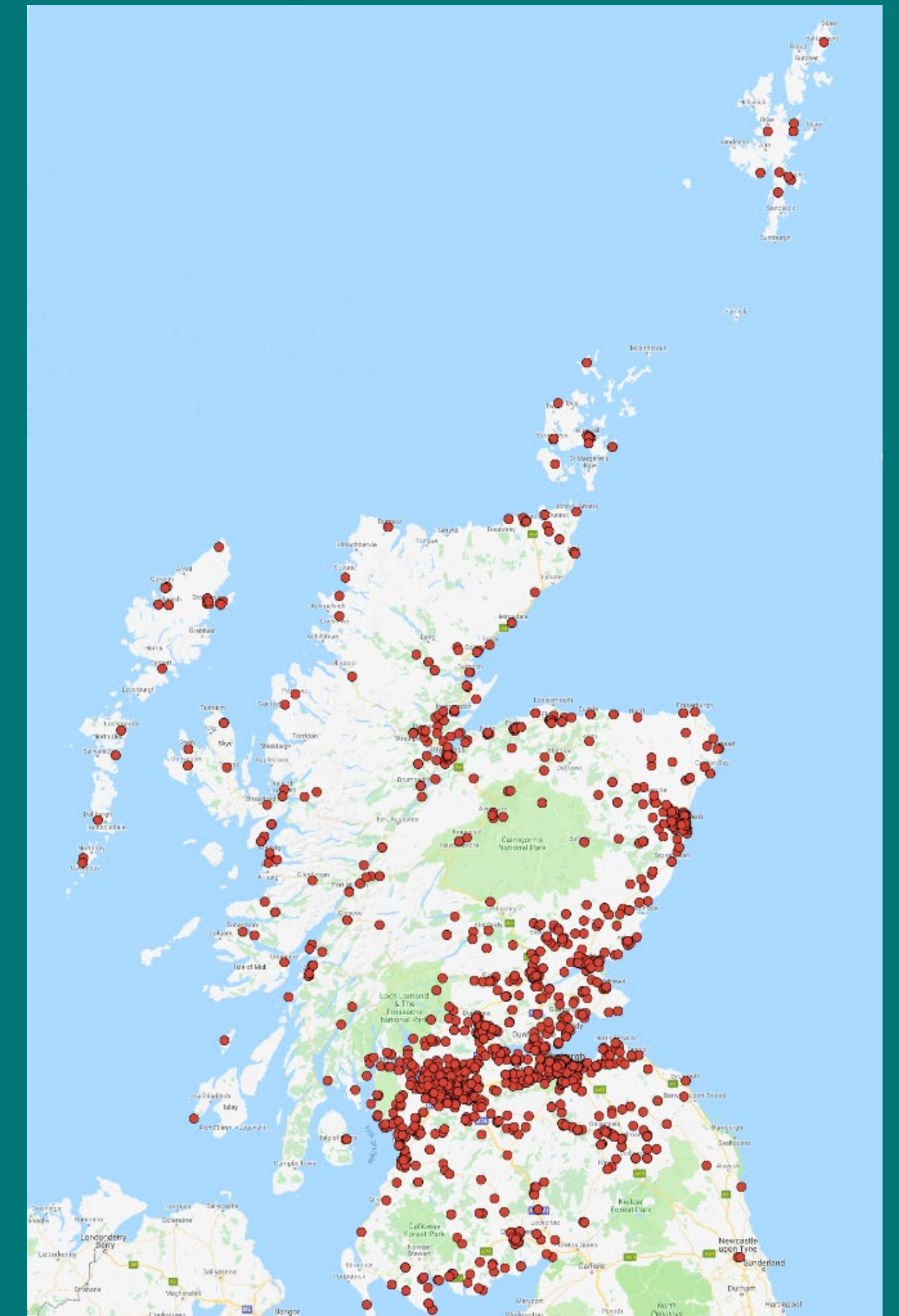
Gail Boag

Dean of The Business School, Edinburgh Napier University

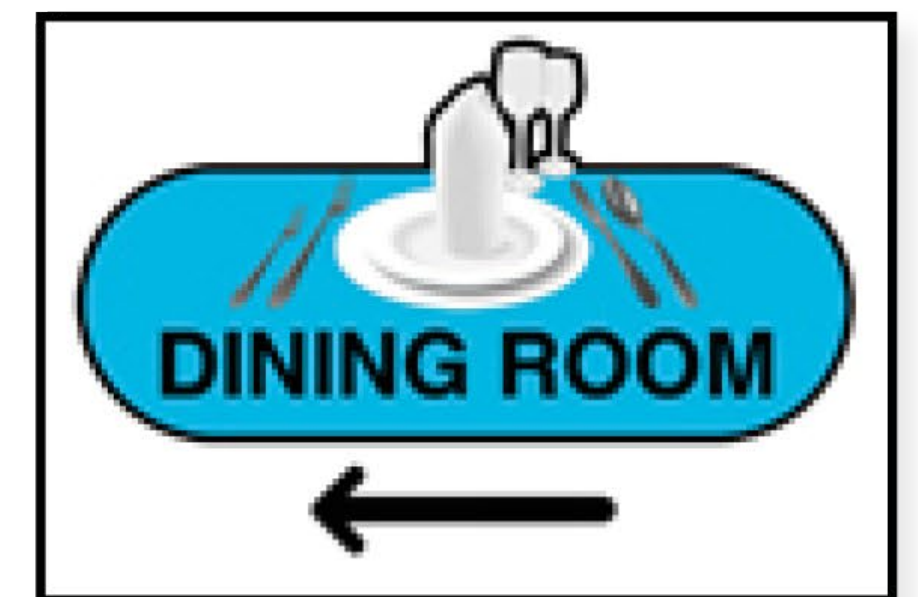
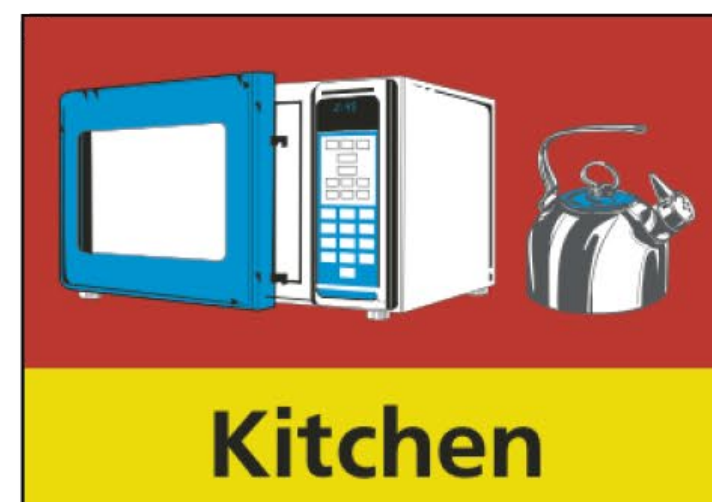
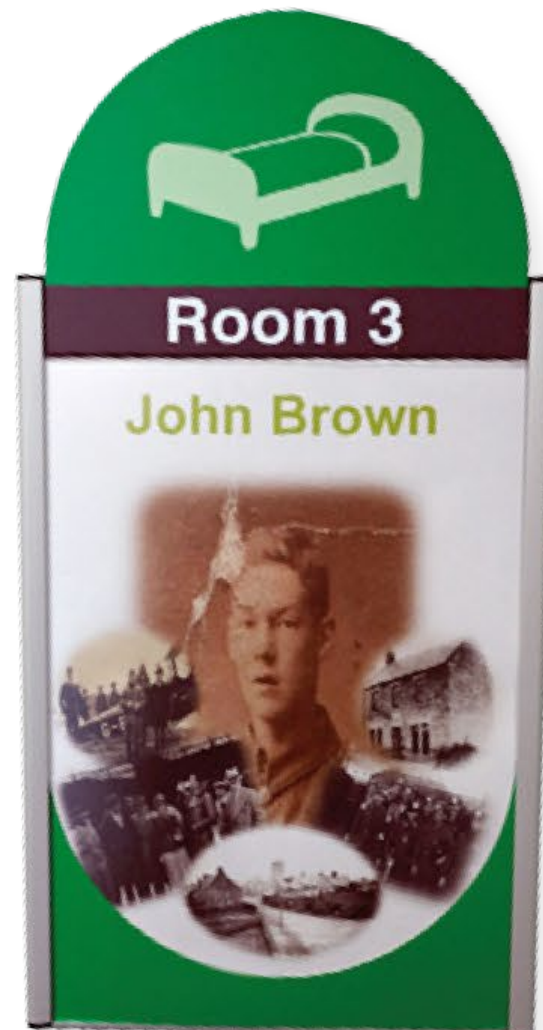
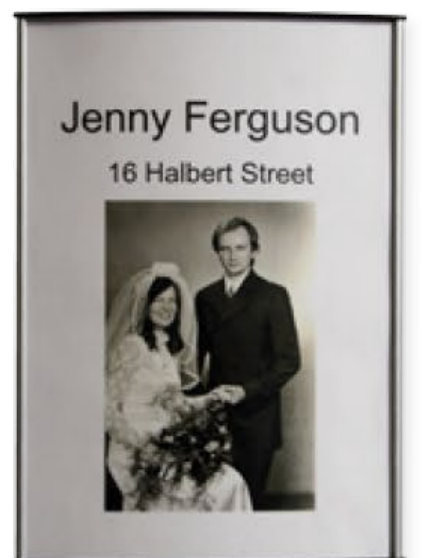
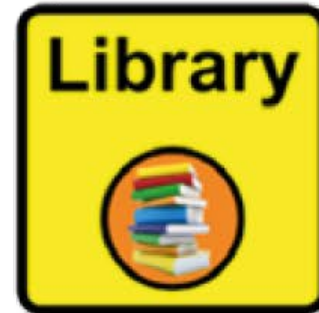


Facts & Figures

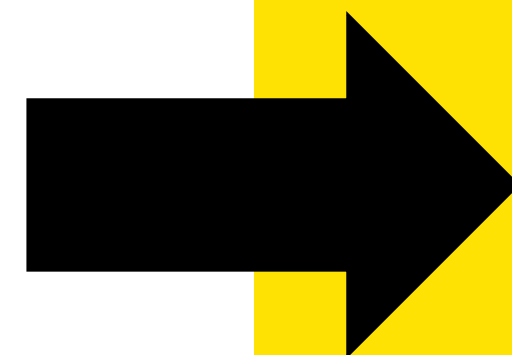
- 5,645 enquiry search specifications have been forwarded to academic partners
- 3,449 businesses introduced to academic partners
- 2,650 company and university collaborative projects initiated
- 97% of businesses said that their project would either not have happened or taken longer without support from Interface
- 92% of expertise searches identified capability and capacity within partner Universities / Research Institute's for consideration by the companies
- 83% of businesses recorded reduced operating costs, increased productivity, profits, export, turnover and new or safeguarded employment
- 71% of first-time company/university collaborations involved companies seeking expertise in a discipline different to their own business sector



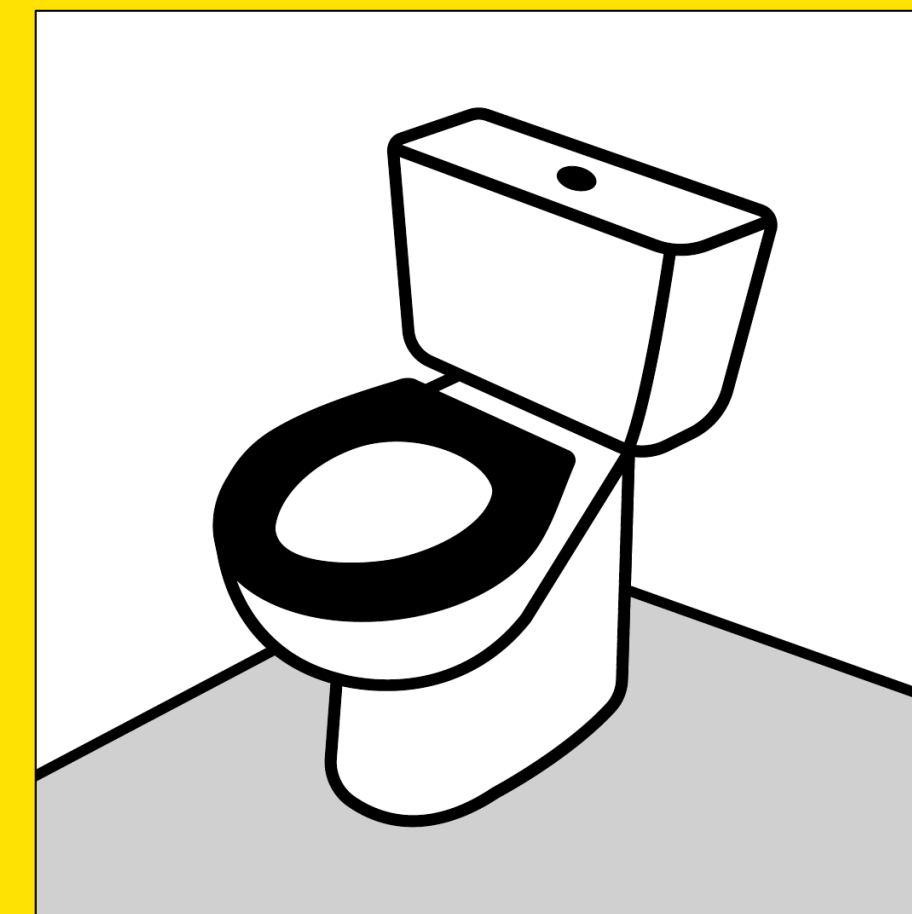
Dementia signage



Shift from ...



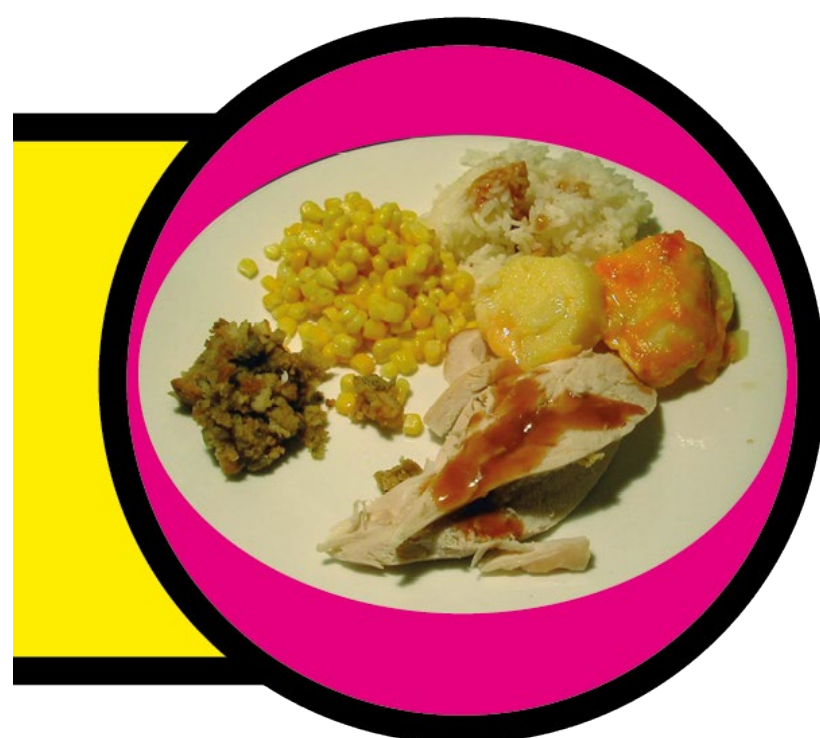
to ...



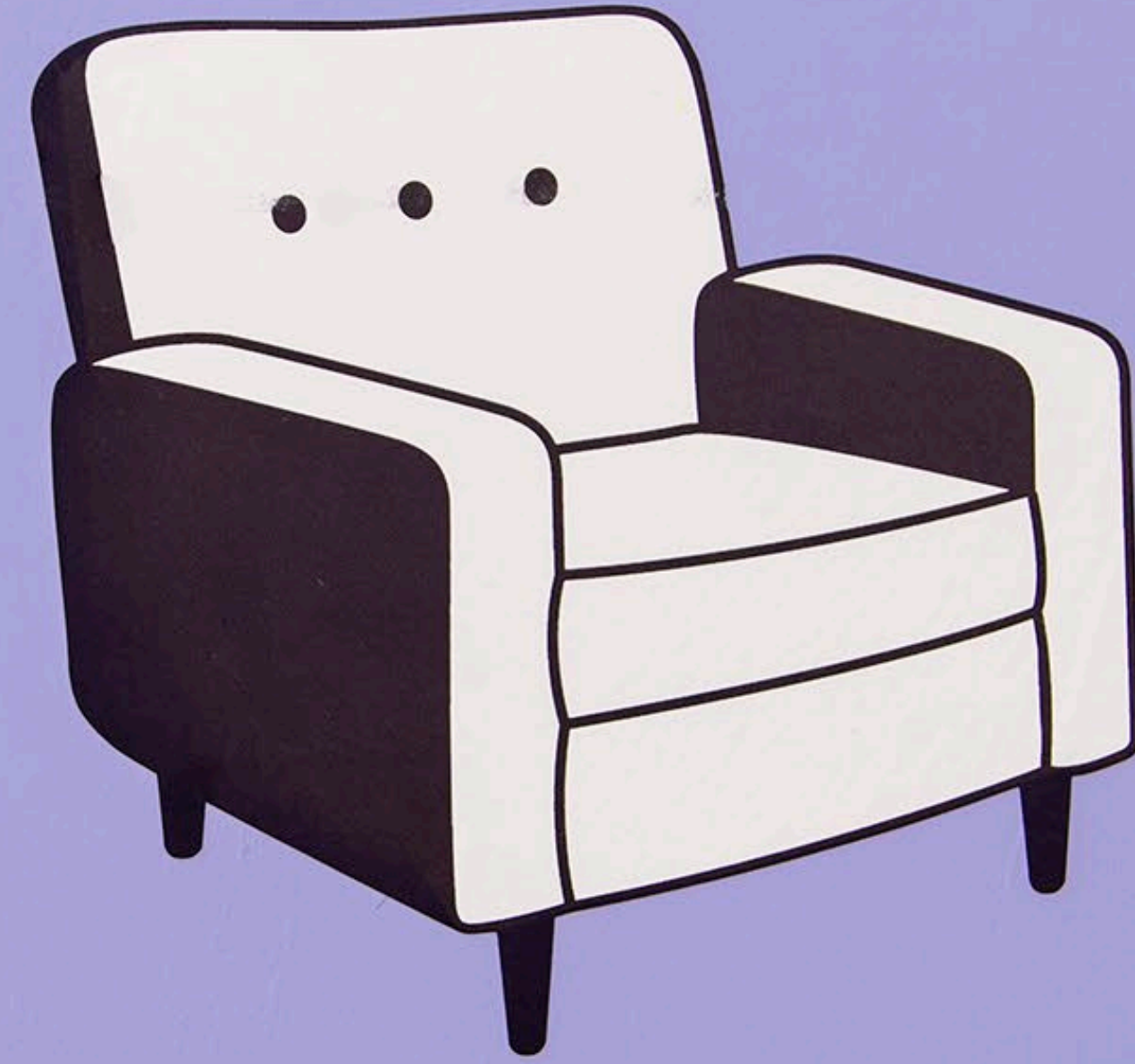
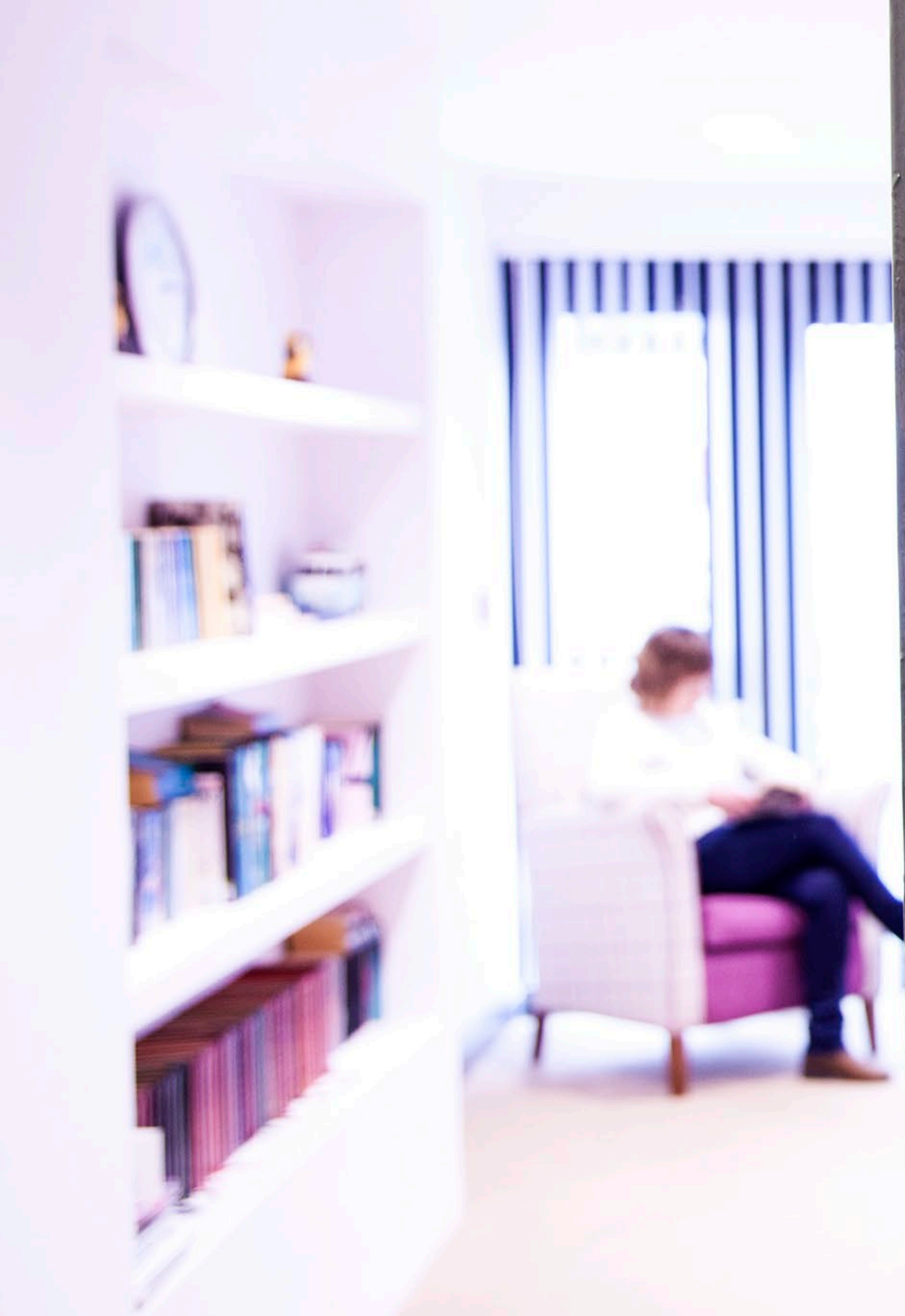
Toilet



Ambiguous pictograms
Unappealing imagery
Poor contrast text
ALL CAPS hard to read

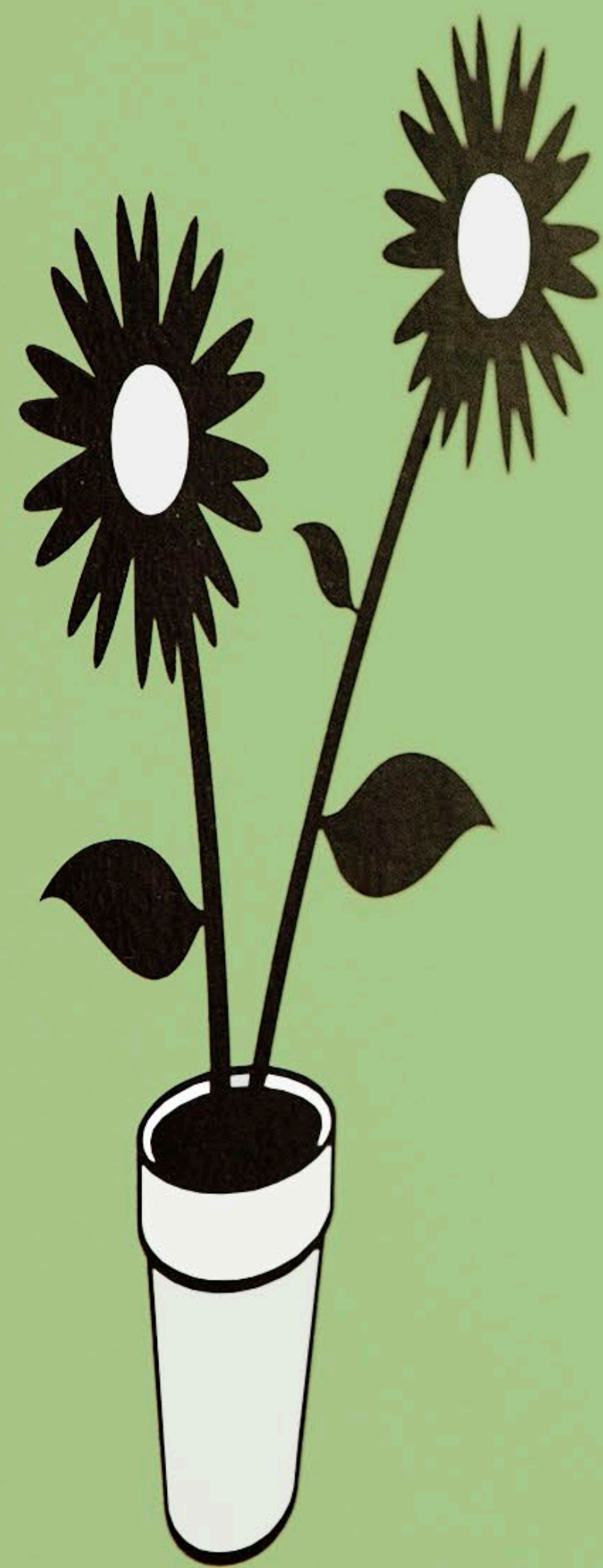


Simple, realistic, 3D imagery
Good contrast
Clear, legible typeface
Sentence case easiest to read
Simple, descriptive text

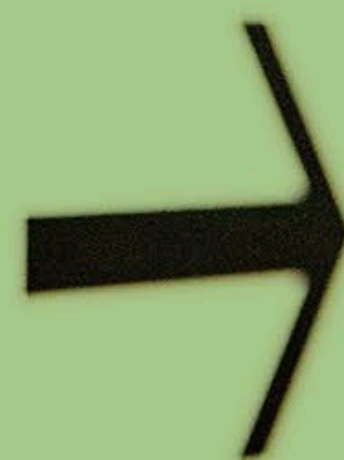


Bluebell Sitting





Garden





Toilet



Everyday symbols

Confusing for people with dementia?

Negative impact on people's confidence and independence?



← Studio Hub

← Toilet



↑ Lift



↑ Toilet
For people with any disability



↑ White Room

up to
Theatre &
Gallery 🍷





**Blue
badge
holders
only**

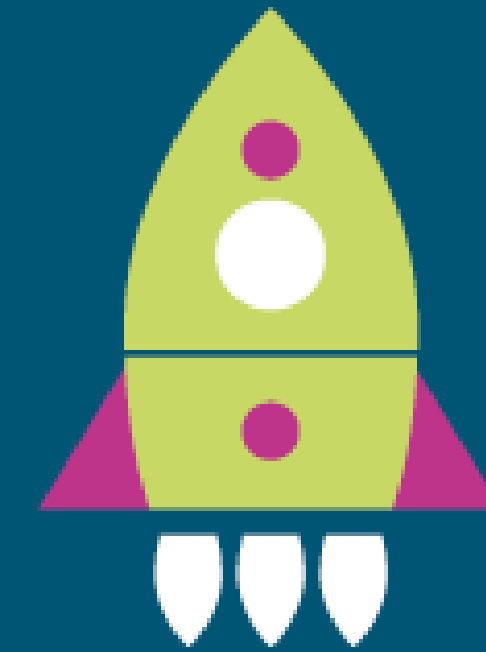
The Firstport Journey



Raising aspiration



Raising ambition



Scale up



What is LaunchMe?



- LaunchMe is Scotland's social enterprise accelerator programme for ambitious social enterprises and community organisations.
- Up to 8 organisations are selected each year to prepare them for growth and to help them to secure investment to achieve social impact at scale.
- The programme involves 8 months of business expert workshops, group meetings, peer support, and a £10,000 repayable grant.
- Since the programme started in 2014, 44 social enterprises have been helped to scale up, 17 of whom have gone on to raise over £1.35m in private investment.

Scale up potential



STS applied to LaunchMe to develop scientifically proven production and application methods, as well as to become investment-ready.

As a result of their participation in LaunchMe, earlier this year they became the first investees of the Catalyst Fund, securing £190k to take their innovative biochar technology to market.

Case study: Sustainable Thinking Scotland CIC

Sustainable Thinking Scotland CIC (STS) is an environmental social enterprise. It delivers projects that encourage local sustainable food production, provides community-scale green waste recycling, and creates learning opportunities for the most vulnerable and disadvantaged in the area.

STS applied to LaunchMe after realising the potential to develop biochar as part of their Kinneil Recycling Project. Biochar is a highly porous form of carbon obtained from baking wood within an oxygen-depleted environment. It has the unique ability to draw and lock in nutrients and toxins from its environment and can be used as a soil additive which can help with soil structure, assisting with water retention and filtration, or it can be 'charged' with nutrients and added to the soil used in food production increasing crop yield and assisting with disease prevention.

Next steps to access support

1. Attend one of our free online events. Register @ <https://www.ceis.org.uk/inclusive-innovation/#event-calendar>
2. Register your idea with Interface @ <https://interface-online.org.uk/contact-us>
3. Interface will work with you to understand your goals and objectives and find the right partner to address your needs.
4. Interface will provide continuous support, including identifying numerous funding opportunities to offset the cost of the project.



Programme overview

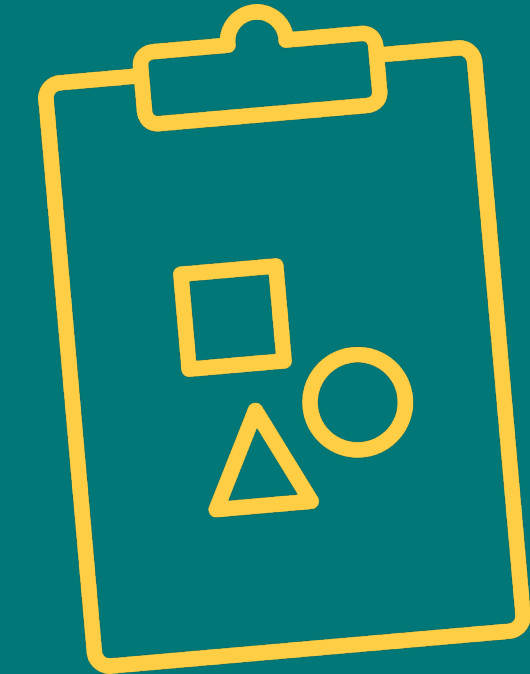
- 14 interactive webinars across 7 themed sectors:
 - Health & Social Care
 - Environment & Net Zero
 - Property, Energy, Utilities, Land, Housing
 - Digital, Data & Fintech
 - Arts & Creative
 - Food, Catering & Hospitality / Agritech & Aquaculture
 - Tourism, Heritage & Festivals / Sport & Leisure



Programme aim + Participation

To facilitate and support innovation across Scotland's third sector.

The programme is designed to raise awareness of the support and resources available to organisations and individuals with innovative solutions that address societal and/or environmental issues within Scotland, and beyond.



What support is available?

- Accessing technical support
- Accessing specialist facilities & equipment
- Conducting detailed market research
- Identifying funding options

All designed to help get your idea off the ground.

